



# MONTHLY MEMBERSHIP PROGRESS REPORT

District 201V6

Results as of: 05/31/2019

GMT: ANN ELDRIDGE

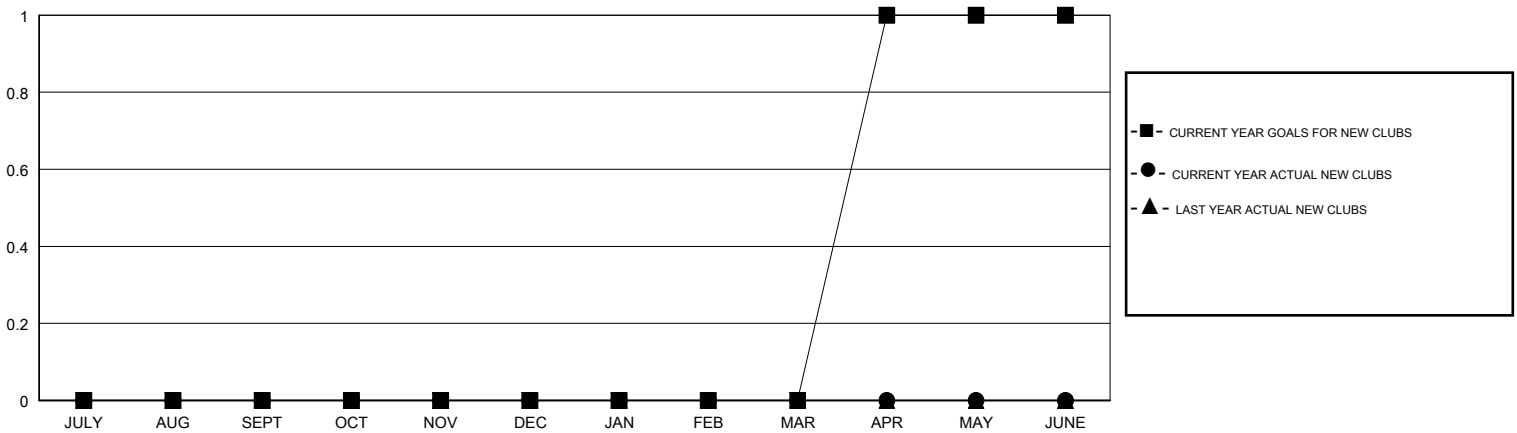
LOCATION AUSTRALIA

GMT CA

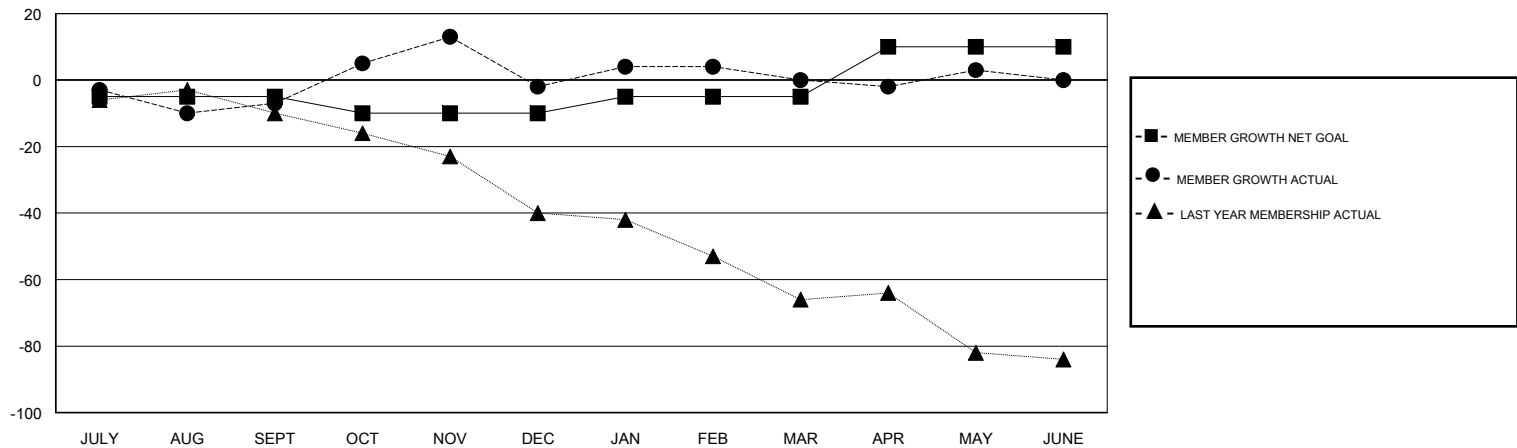
Clubs			
RESULTS FOR 2018-2019			
QUARTER	NEW CLUB GOAL	NEW CLUBS	DROPPED CLUBS
JULY/AUG/SEPT	0	0	1
OCT/NOV/DEC	0	0	0
JAN/FEB/MAR	0	0	0
APR/MAY/JUNE	1	0	0

Members			
RESULTS FOR 2018-2019			
QUARTER	MEMBER GROWTH NET GOAL	MEMBER GROWTH ACTUAL	DROPPED MEMBERS ACTUAL (including transfers)
JULY/AUG/SEPT	-5	27	33
OCT/NOV/DEC	-5	42	36
JAN/FEB/MAR	5	20	14
APR/MAY/JUNE	15	29	25

GOALS AND ACTUAL NEW CLUBS CUMULATIVE



GOALS AND ACTUAL MEMBERS CUMULATIVE



DROPPED CLUBS: 1	38 CLUBS OF 60 ADDED 1 OR MORE NEW MEMBERS	<u>GENDER DISTRIBUTION</u> MALE 885 (72.54%) FEMALE 335 (27.46%) Women Percentage Fiscal Year Goal: 28%
<u>DROPPED MEMBERS</u> DECEASED 18 CLUB CANCELLED 0 OTHER 90 TOTAL 108	<a href="#">CLICK HERE FOR CUMULATIVE MEMBERSHIP DATA</a>	TOTAL FAMILY UNIT MEMBERS 182 FAMILY MEMBERS PAYING HALF DUES 92